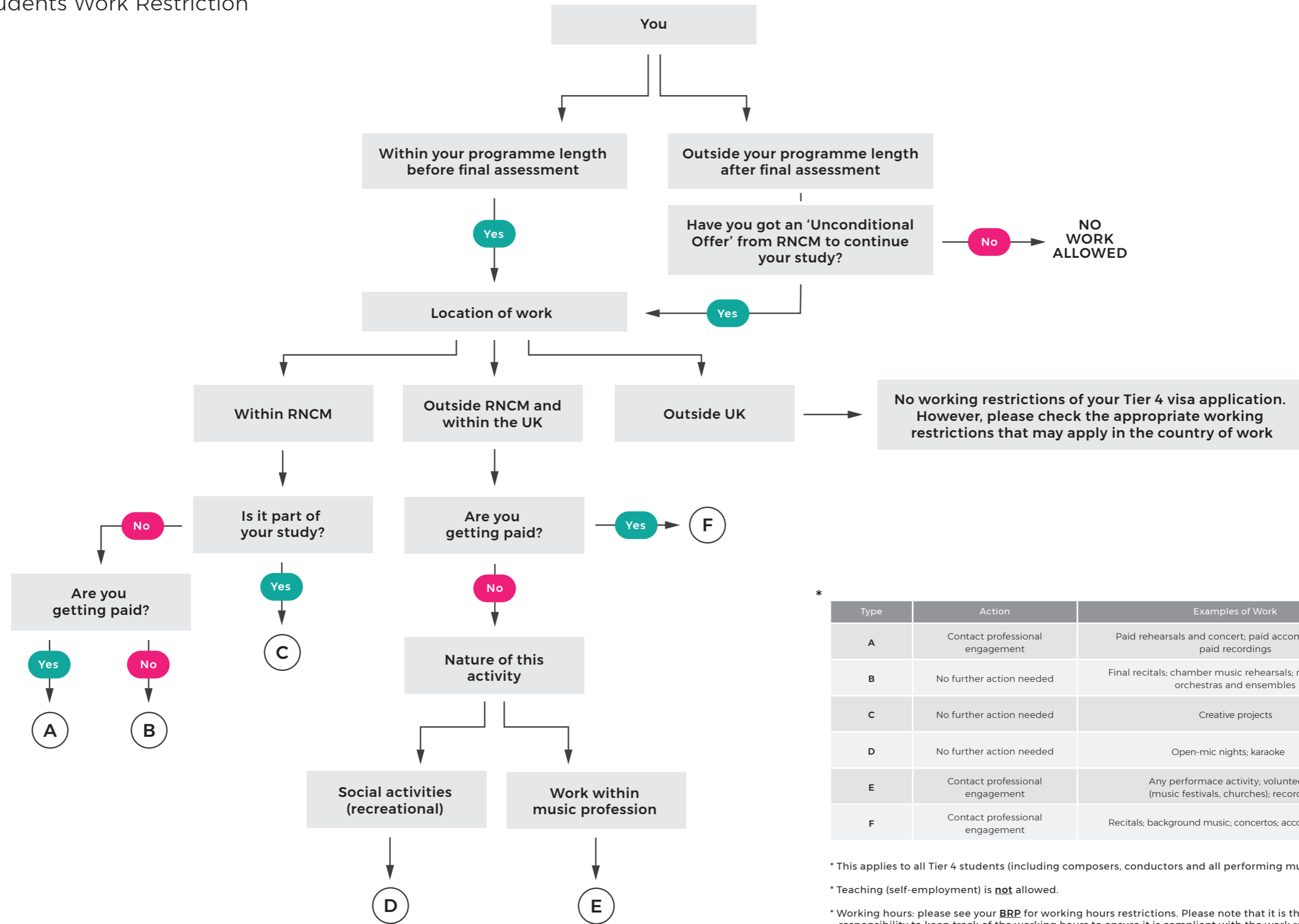


# Can I Undertake Performance Work?

## Tier 4 Students Work Restriction



\*

Type	Action	Examples of Work
A	Contact professional engagement	Paid rehearsals and concert; paid accompaniments; paid recordings
B	No further action needed	Final recitals; chamber music rehearsals; masterclasses; orchestras and ensembles
C	No further action needed	Creative projects
D	No further action needed	Open-mic nights; karaoke
E	Contact professional engagement	Any performance activity; volunteering (music festivals, churches); recordings
F	Contact professional engagement	Recitals; background music; concertos; accompaniments

\* This applies to all Tier 4 students (including composers, conductors and all performing musicians).

\* Teaching (self-employment) is **not** allowed.

\* Working hours: please see your **BRP** for working hours restrictions. Please note that it is the student's responsibility to keep track of the working hours to ensure it is compliant with the work restrictions.

\* Students who are on the Short-term Study Visa are not allowed to work.

For non-performance work restrictions, please visit: [ukcisa.org.uk/Information--Advice/Working/Can-you-work](http://ukcisa.org.uk/Information--Advice/Working/Can-you-work)  
Please do not hesitate to contact the International Office at [international@rncm.ac.uk](mailto:international@rncm.ac.uk) if you have any questions.